

State Patient Safety Adverse Event Reporting System

Announcement



Serebrum and MERS Announce the First Ever Patient Safety Adverse Event System for State Health Departments

September, 2008 – Iselin, NJ

Serebrum Corporation announced a partnership with MERS International to develop and market a State-level adverse event reporting system, PatientFirst, targeted at State Health Departments.

Based on MERS-TM, a leading platform for hospital adverse events, PatientFirst helps a State collect, track and facilitate root cause analysis on serious adverse events.

PatientFirst

Events | RCA | Dashboard | Reports

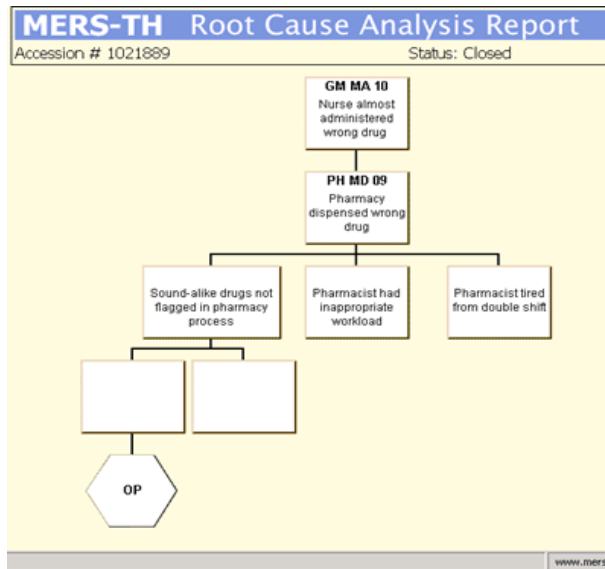
EVENT ID: AE- Sep 8, 2007 EVENT TYPE: FROM: Sep 8, 2007 TO: Sep 8, 2007

Event ID	Report Date	Patient Name	Medical Record #	Facility Name	Reporter	Status
071011-1	Tue, 25 Sep 2007 17:00:00 PM	Taylor, Ann	222222	Dental	Wang , Jason	Approved
071011-10	Tue, 25 Sep 2007 17:00:00 PM	Hamilton,Lewis	111111	Internal	Martinez,Marie	In-process
071011-11	Wed, 26 Sep 2007 10:00:00 AM	Edwards,Collin	999111	General	Shepard,Derick	Submitted
071011-12	Fri, 21 Sep 2007 00:00:00 AM	Lennon, John	333311	Cardio	Turner,Will	Rejected
071011-17	Sun, 2 Sep 2007 00:00:00 AM	Robson,Brian	111222	OR	Hall,Susan	Rejected
071011-20	Tue, 25 Sep 2007 00:00:00 AM	King, Jason	111122	ER	Lee, Jason	Rejected
071011-22	Wed, 26 Sep 2007 10:00:00 AM	Johnson,Alan	121211	Neuro	Jones , David	Rejected
071011-37	Wed, 26 Sep 2007 09:00:00 AM	Geller,Ross	111222	General	Green, Rachel	Rejected
071011-54	Wed, 26 Sep 2007 10:00:00 AM	Jones,David	234522	ER	Baggins,Frodo	Rejected

Approved ■ In-process ■ Submitted ■ Rejected ■

PatientFirst Event Reporting Module

Help healthcare facilities report data, aggregate and track cases to closure.

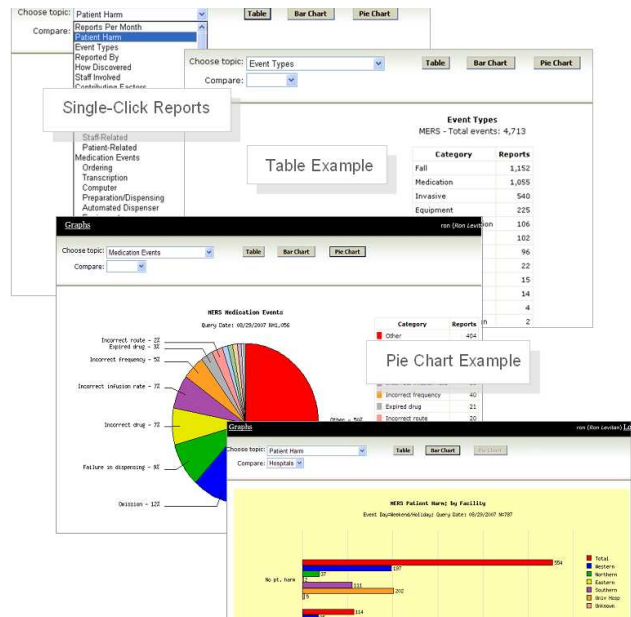


Root Cause Analysis Module

Find out what happened and why. Identify methods to resolve a potential serious process issue.

Reporting

Report and share data with citizens, health professionals, State and Federal agencies.



More information

For a demo on how PatientFirt can help to State Health Departments monitor and improve healthcare quality, contact:

Phone: 1.877.WebSphere ext 201

Email: krishna@serebrum.com

Website: <http://www.serebrum.com>

Serebrum Corporation, 555 US Highway I South, Suite 340, Iselin, NJ 08830